



# Radiology Top Tips for the Multidisciplinary ILD Team

Dr Becca Duerden

Consultant Radiologist

Stockport NHS Foundation Trust

# Top Tips

- Who... can help with ILD imaging?
- What... questions to ask of them?
- Why... is it important to communicate?
- When... you know what you know, and what you don't...
- How... to know when to rely on the radiology?

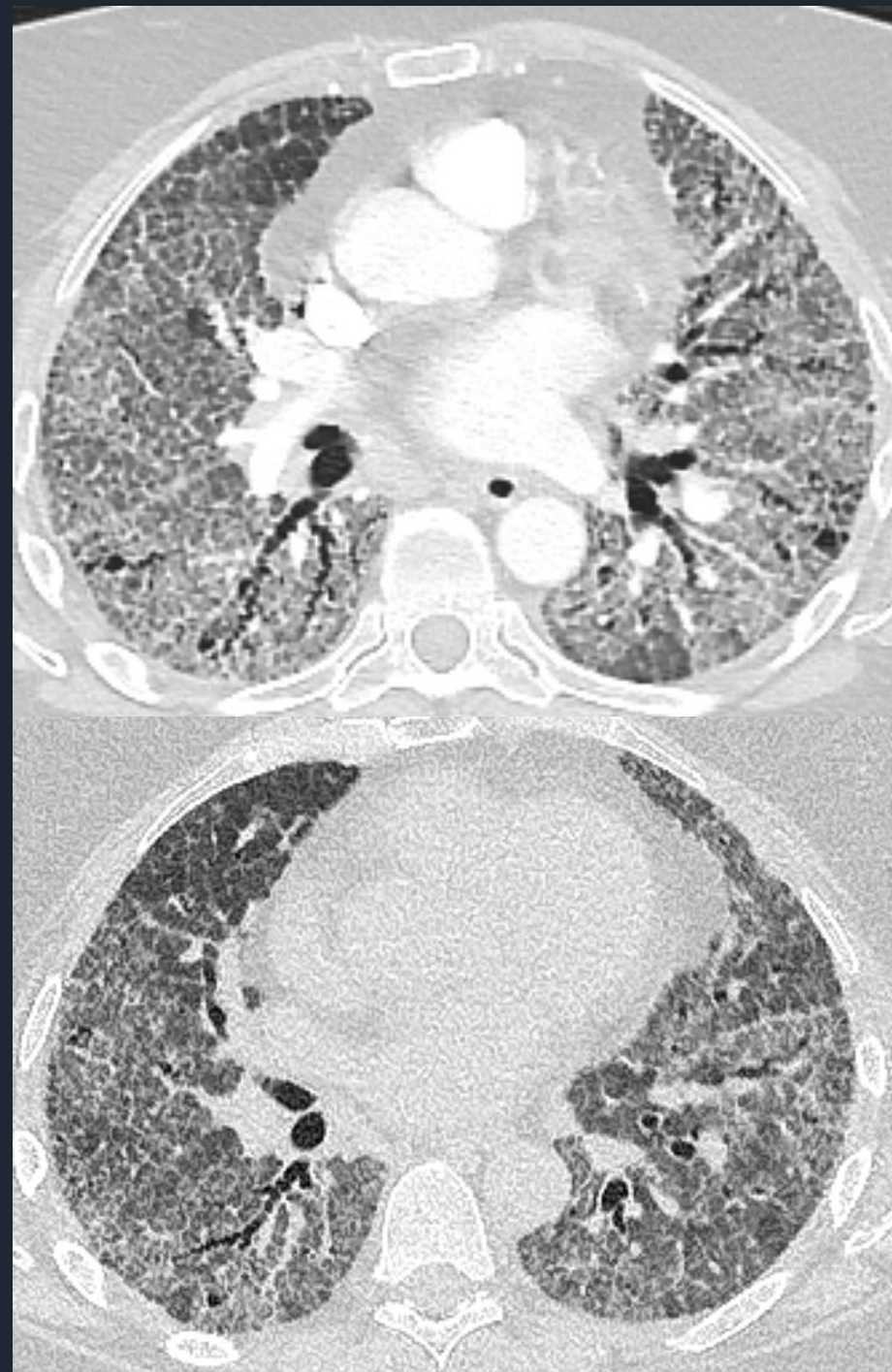
# Tip 1 'Who'

- Get to know your imaging team
- Radiologists
- Radiographers
- Radiology assistant
- Admin Team
- Booking Team



## Tip 2 'Why'

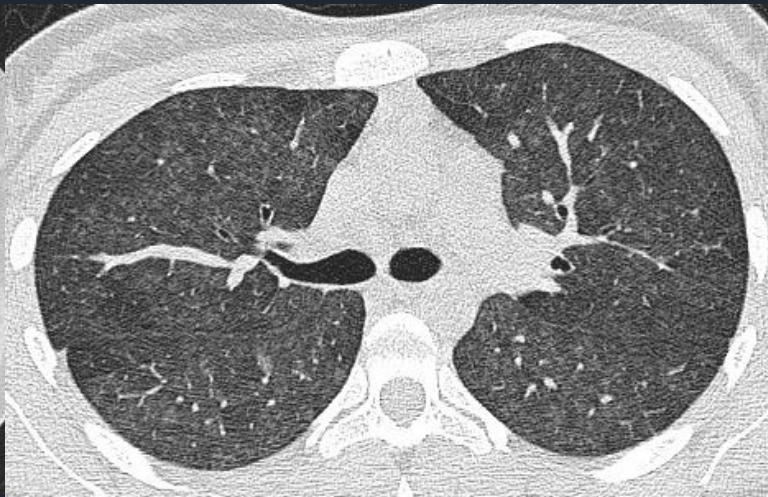
- Understand the different scan techniques
  - HRCT- high resolution- is standard on all modern scanners
  - Non-contrast matters!
  - Inspiratory imaging should be volumetric in older patients to improve detection of abnormalities in airways and nodules
  - Expiratory imaging is used to assess air trapping
  - Prone imaging is essential to exclude gravitational interstitial change



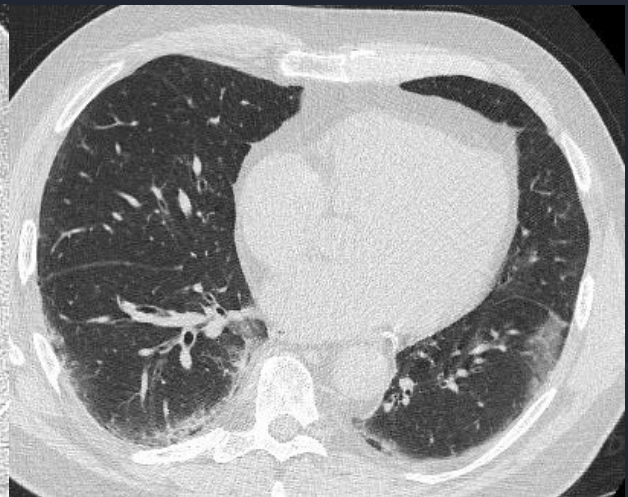
# Tip 2



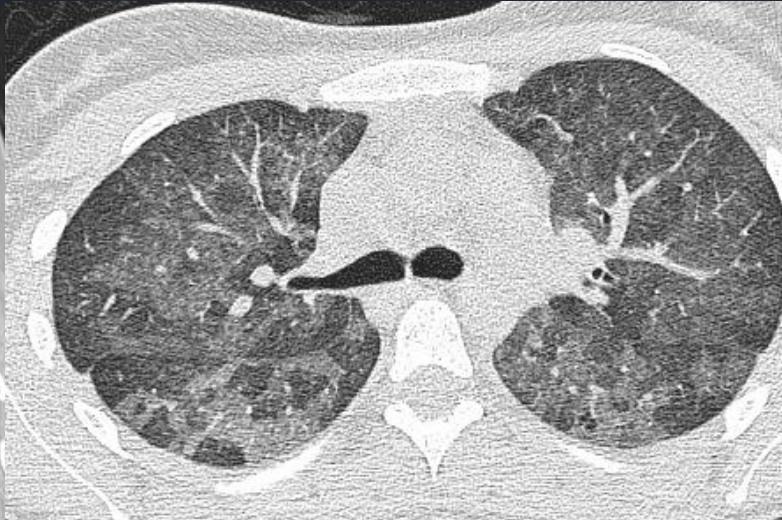
Inspiratory volume



Expiratory



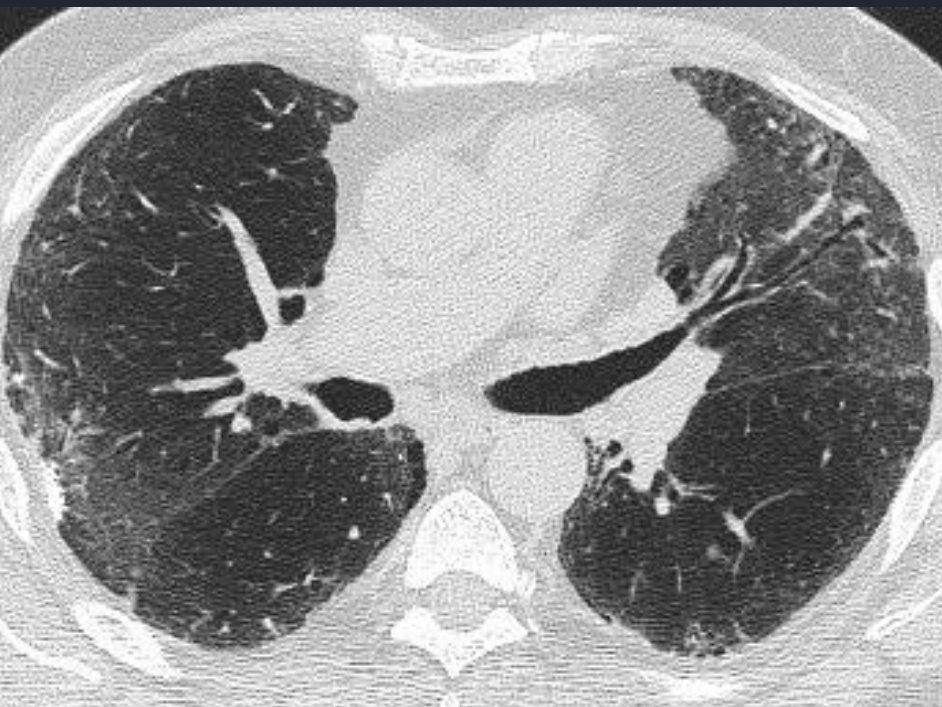
Prone



## Tip 3 'Why'

- Provide the correct clinical information
  - Smoking history
  - Exposure and occupational history
  - Drug history
  - Past medical history, particularly CTD
  - Infectious disease history including immunocompetency
  - Surgical history, including biopsies!

# Tip 3 'UIP?'



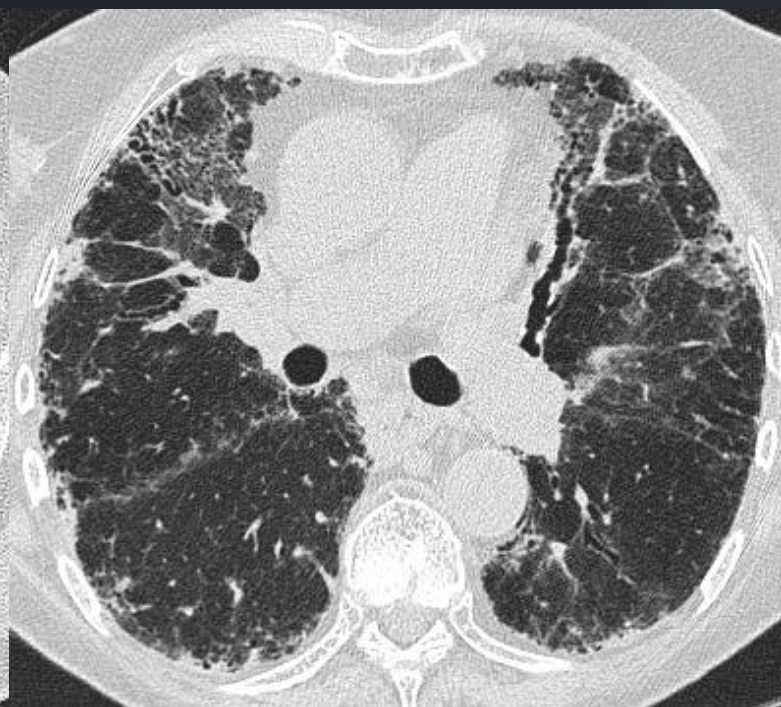
Smoker

DIP



Ventricular tachycardia

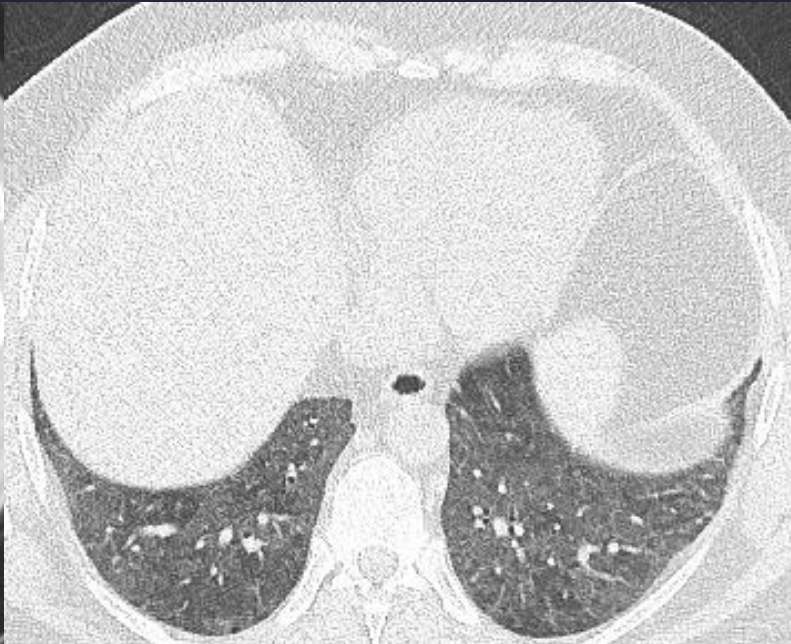
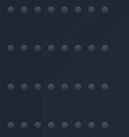
Amiodarone toxicity



Breast cancer

Herceptin toxicity

# Tip 3 'NSIP?'



Swallowing difficulty

Keeps pigeons

Productive cough

Systemic sclerosis

Hypersensitivity Pneumonitis

Alveolar Proteinosis



# Tip 3 'Nodules?'



Skin rash

Sarcoidosis



Ex miner

Pneumoconiosis



Vaping history

Vaping pneumonitis

# Tip 4 'What'

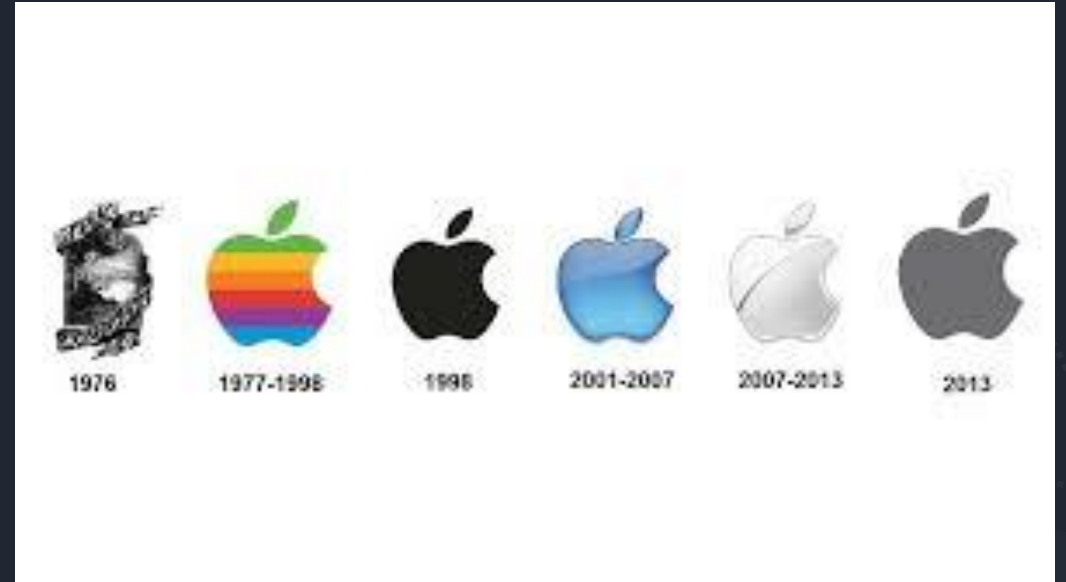
- Is this...

- UIP?
- CTD ILD?
- progressing?
- improving?
- needing biopsy?

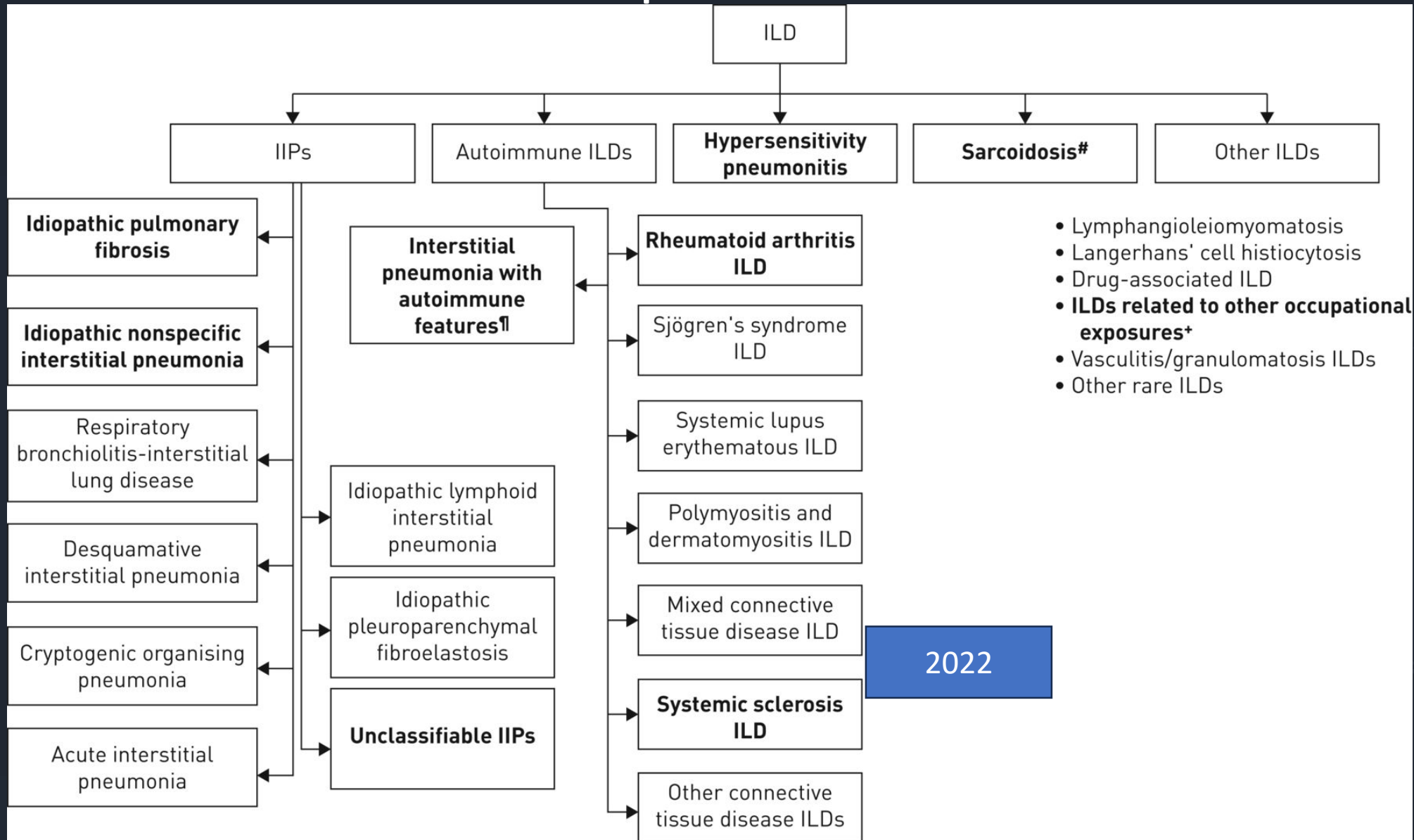


# Tip 4 'When'

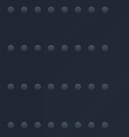
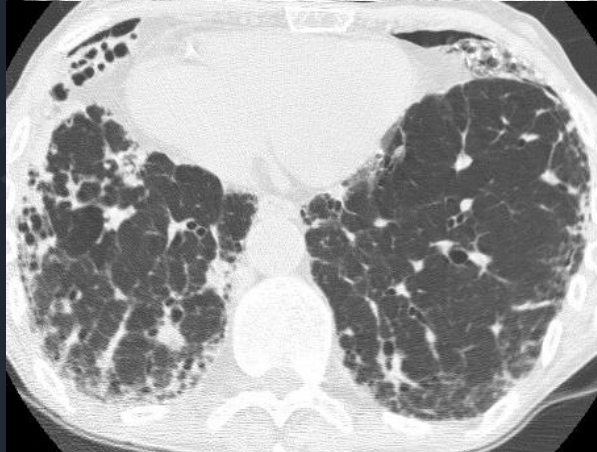
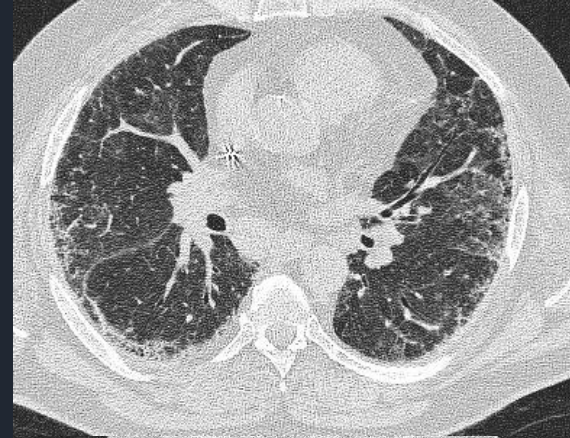
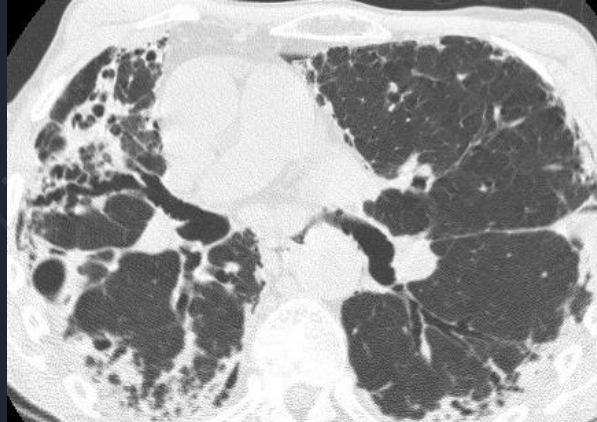
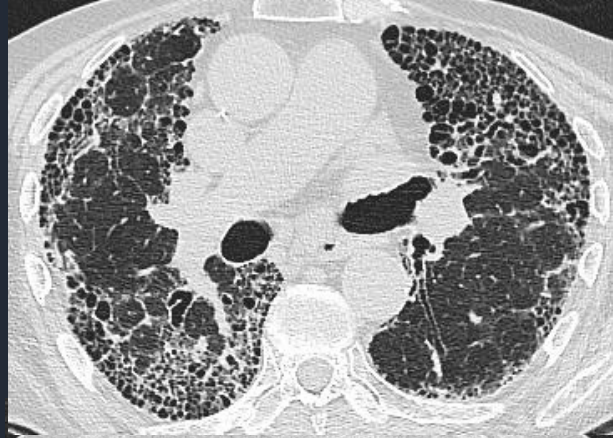
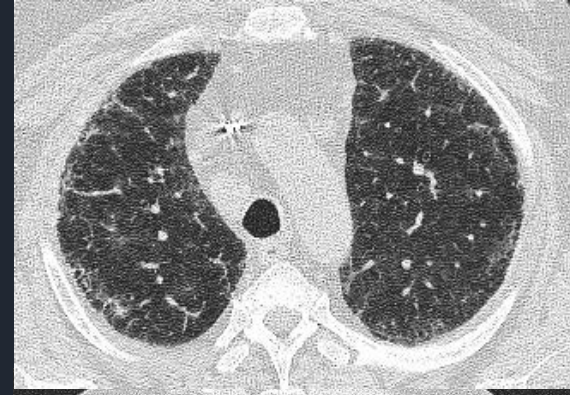
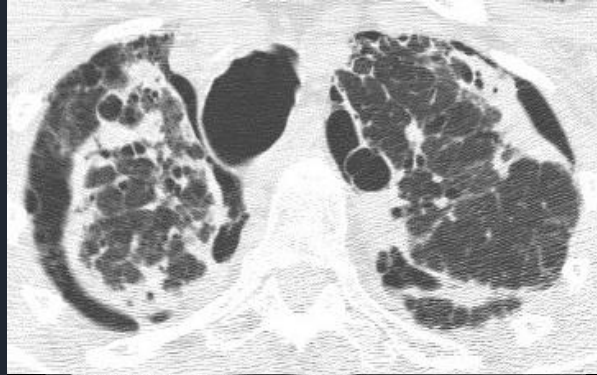
- Classical/typical pattern UIP/NSIP
- Atypical pattern UIP/NSIP
- Non-specific pattern
- Progressive pulmonary fibrosis/progressive fibrosing ILD



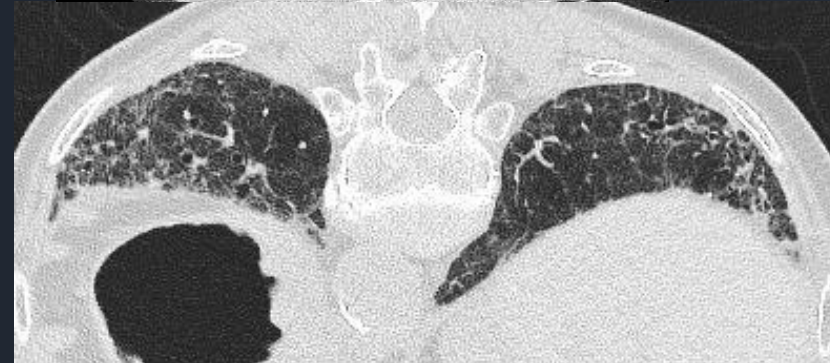
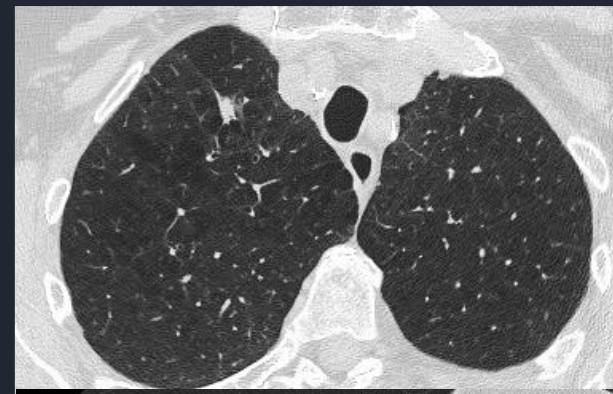
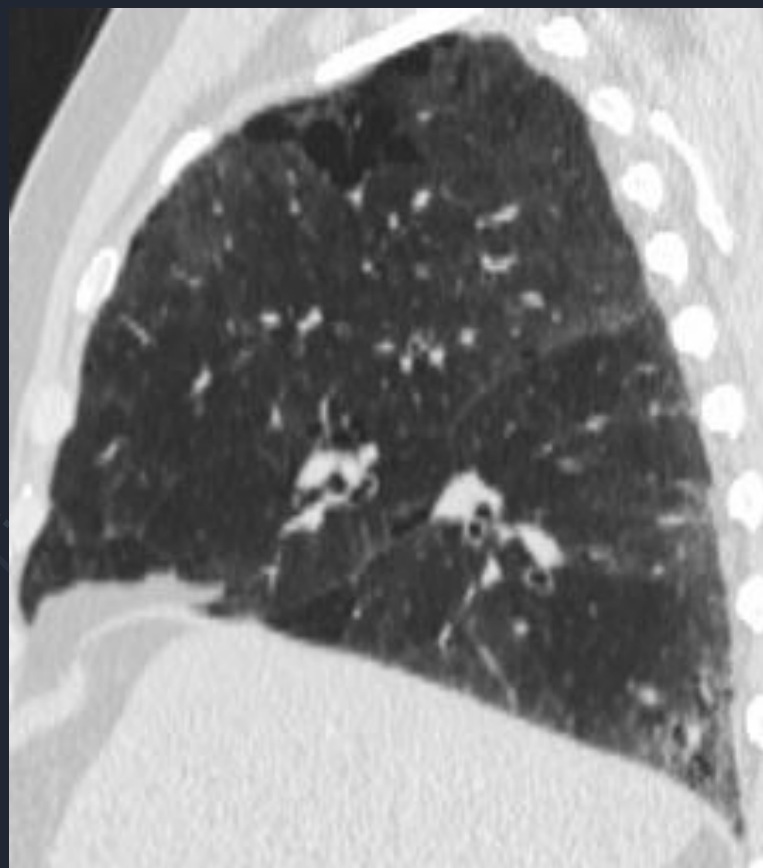
# Tip 4



# Tip 4

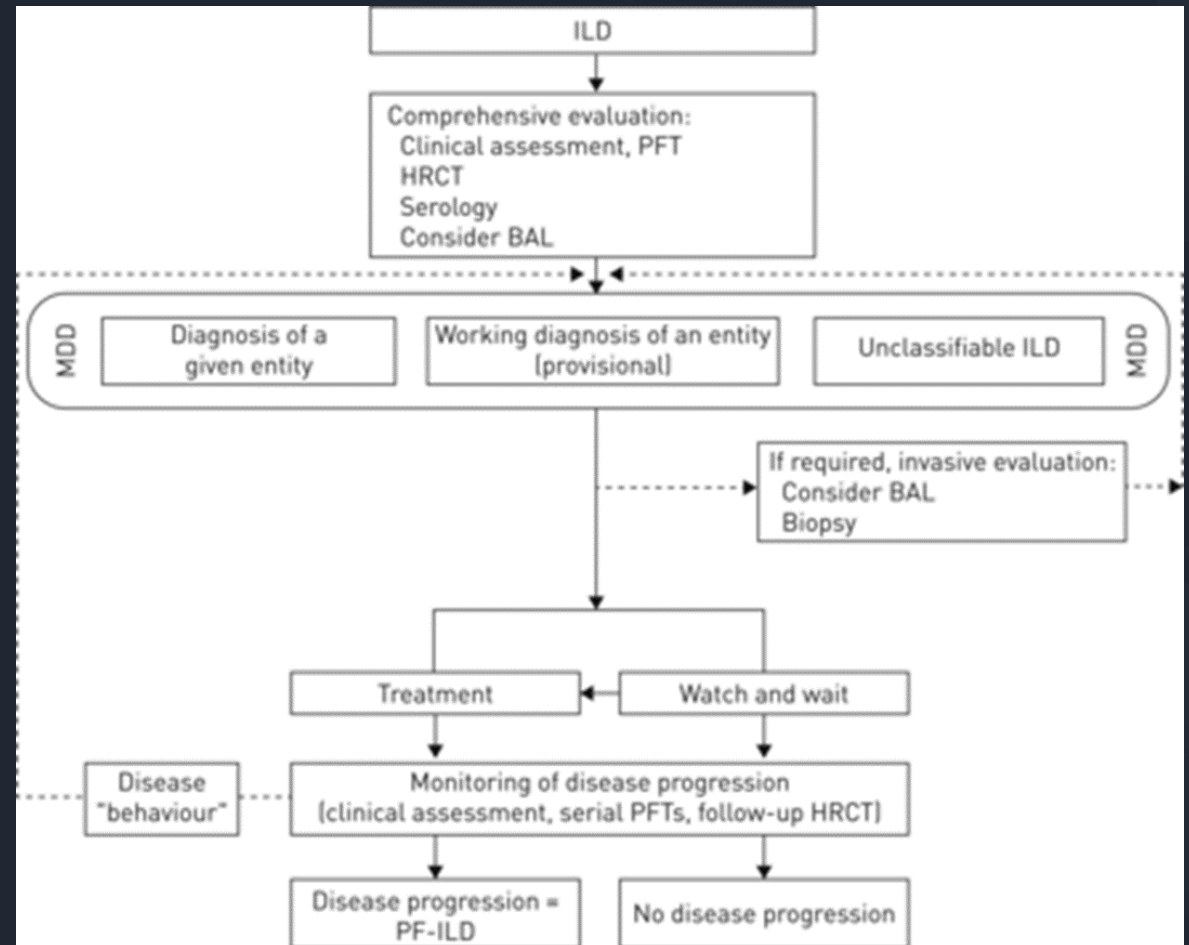


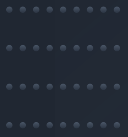
# Tip 4



# Tip 5 'How'

- Expert opinion for reporting or reviewing
- Provision of all clinical information
- MDT discussion/re-discussion
- Feedback
- Education and CPD





# Thank You

Any questions?

